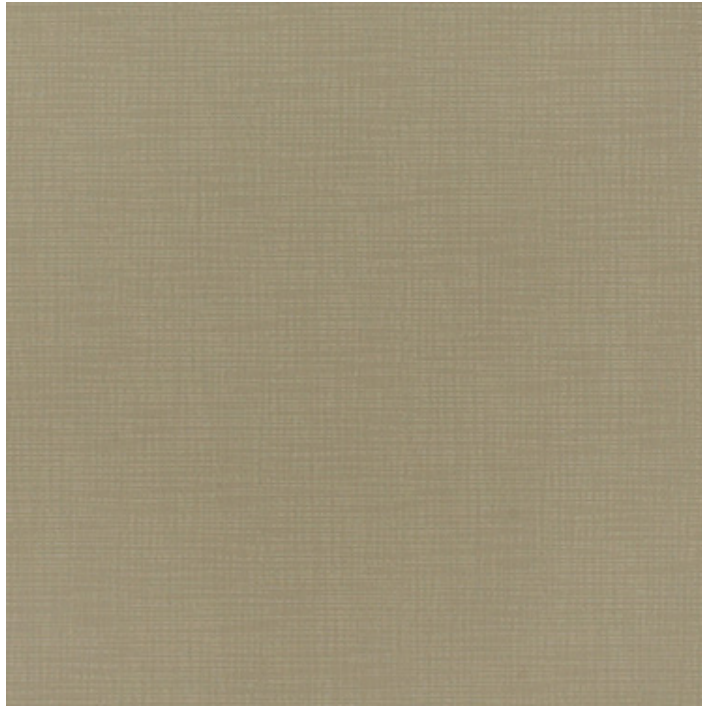


Silica Etch – Product Specifications



Pattern: Silica Etch
Color: Flint
Product Number: 09157894
Content: 100% Silicone
Reduced Environmental Impact: GREENGUARD Gold Certified; PVC Free
Repeat:
Railroaded: No
Dye: N/a
Backing: Polyester
Finish: -
Durability: 270,000 D.R.
Flame Resistance: CA Bulletin 117 2013; UFAC Class 1; NFPA 260 Class 1
Width: 54"
Weight: 1.47 lb.
Maintenance: WS - Water-Based Cleaning Agents OR Foam; Bleach Cleanable (4:1)
Proprietary: ©2015

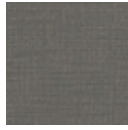


Multiple factors affect fabric durability and

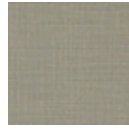
appearance retention, including end-user application and proper maintenance. Wyzenbeek results above 100,000 double rubs have not been shown to be an indicator of increased lifespan.



Sage



Slate



Wetstone



Wistful

