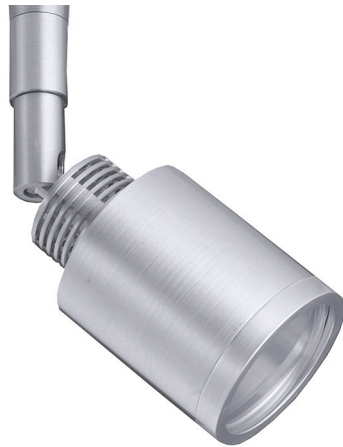


1. CAUTION: Read all instructions.

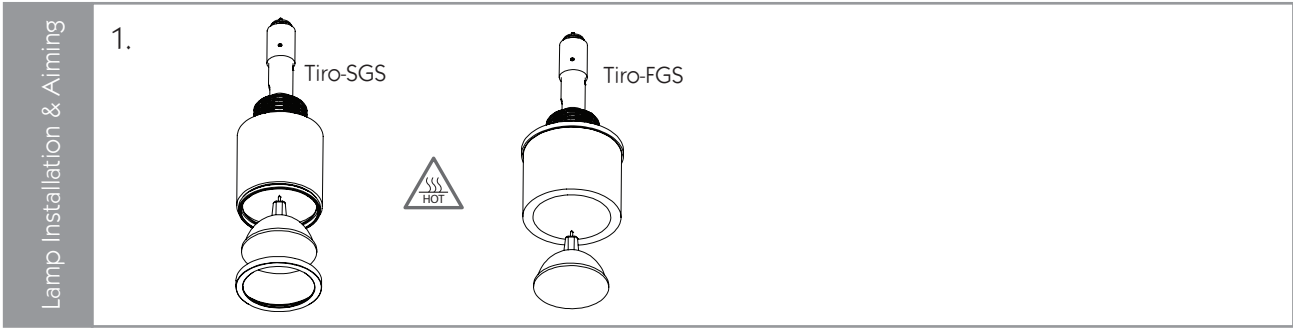
- Do not install any Spotlight closer than six inches from any curtain or similar combustible material.
- Do not install this system in a damp or wet location.
- Turn off electrical power before modifying the lighting system in any way.
- Ensure the Spotlight connector is attached correctly to the system with no cross threading and is tightened down completely to make contact with the top of the track.
- Ensure all connections are tight. Loose connections can cause overheating, arcing and a potential fire risk.
- Always use appropriate lamps and ensure they are fitted securely.
- Use only as described in these Tegan Lighting Installation Instructions.
- Use only Tegan Lighting supplied accessories.
- Luminaires may be extremely hot, allow to cool before touching.
- These are 12VAC Spotlights; they must be connected to an appropriate 12VAC power supply. Refer to Specification Sheets.
- For proper installation, have a qualified electrician install this product.
- This luminaire must be wired and grounded in accordance standard accepted electrical installation practices, local codes, and ordinances.
- Wire supply connections must be made with U.L. or comparable testing agency-approved connectors.
- Regular cleaning of these products is important. Switch off at main supply and allow to cool before touching. Clean fittings with a soft damp cloth and allow to dry before reconnecting power supply.



Tiro - Short Glare Shield (Tivo-SGS)

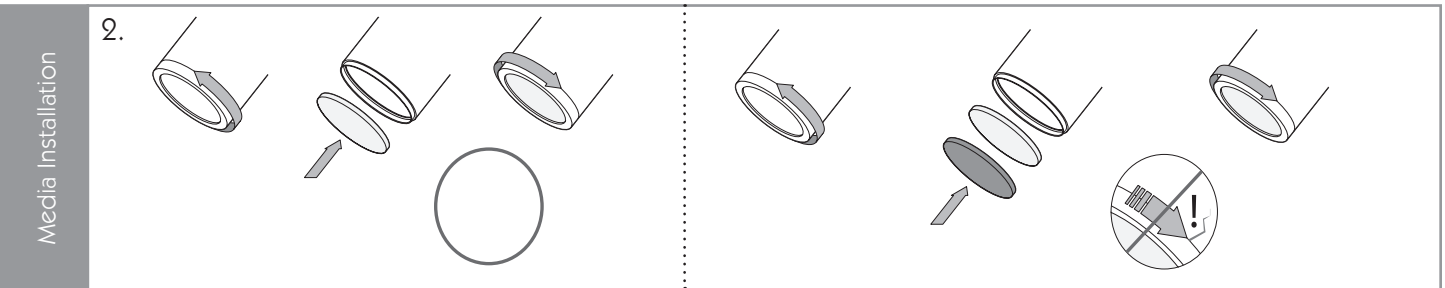


Tiro Frit Glass Shield (Tiro-FGS)



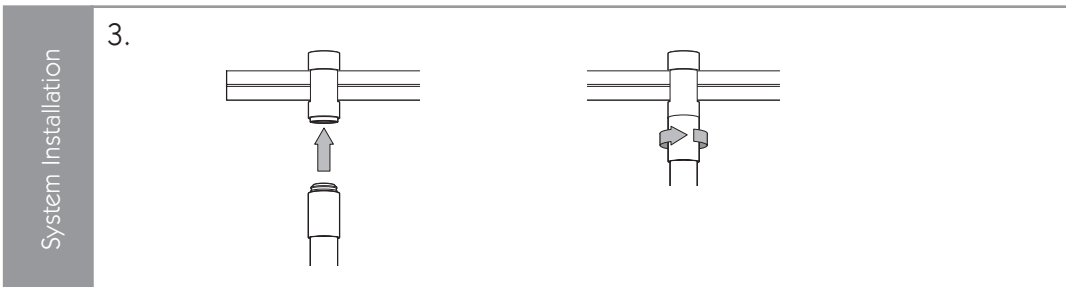
1. Changing the Tivo Lamp

- CAUTION lamp and lamp housing may be extremely hot. Allow to cool before touching.
- For the Tiro-SGS, twist front ring counterclockwise and remove. There is no ring for the Tiro-FGS.
- Install lamp, ensuring it is connected securely.
- To reattach front ring, twist clockwise until you hear a “click.”
- Use a LED or Halogen MR-16 bi-pin lamp; 50W MAX. Lamp by others.



2. Installing Accessories (for Tiro-SGS only)

- Remove front ring to insert one media. Replace front ring to secure.
- For up to 2 Media, replace front ring with Tiro Media Holder 2 - 16 (TMH2-16) containing up to 2 Media.
- Tighten until snug, overtightening can cause damage.



3. Installing the Spotlight with Centro Trac, Retrac or Duplex Cable Connector

- Insert Centro Trac, Retrac, or Duplex Cable Connector into Trac System, ensuring locking screws are aligned (Centro Trac shown in diagram; refer to specific System Installation Sheets for details). No connector is required for Monopoints.
- Rotate connector collar until spotlight is securely fastened.
- The Spotlight connects to the Connector with the Twist & Click mechanism. The Spotlight “clicks” into the the jack plug socket, then twists into position to lock the connection in place.

NOTE: Do not exceed maximum number of Spotlights per driver wattage rating, doing so will damage system.