

MINI-KORE PENDANT

J-BOX & MONOPOINT MOUNT
INTEGRAL & REMOTE POWER SUPPLY(S)

SAFETY INSTRUCTIONS

CAUTION: READ ALL INSTRUCTIONS.

- Do not install any Pendant closer than six inches from any curtain or similar combustible material.
- Do not install this system in a damp or wet location.
- Turn off electrical power before modifying the lighting system in any way.
- Ensure the Pendant is attached correctly to the Monopoint system with no cross threading and is tightened down completely to make contact with the Monopoint. Refer to "Twist & Click" image below.
- Ensure all connections are tight. Loose connections can cause overheating, arcing and a potential fire risk.
- Use only as described in these Tegan Lighting Installation Instructions.
- Use only Tegan Lighting supplied accessories and Power Supply(s).
- Luminaires may be extremely hot, allow to cool before touching.
- These are 24VDC Pendants; they must be connected to an appropriate 24VDC power supply and compatible 0-10V dimming control. Refer to Specification Sheets.
- For proper installation, have a qualified electrician install this product.
- This luminaire must be wired and grounded in accordance with standard accepted electrical installation practices, local codes, and ordinances.
- Wire supply connections must be made with U.L. or compatible testing agency-approved connectors.

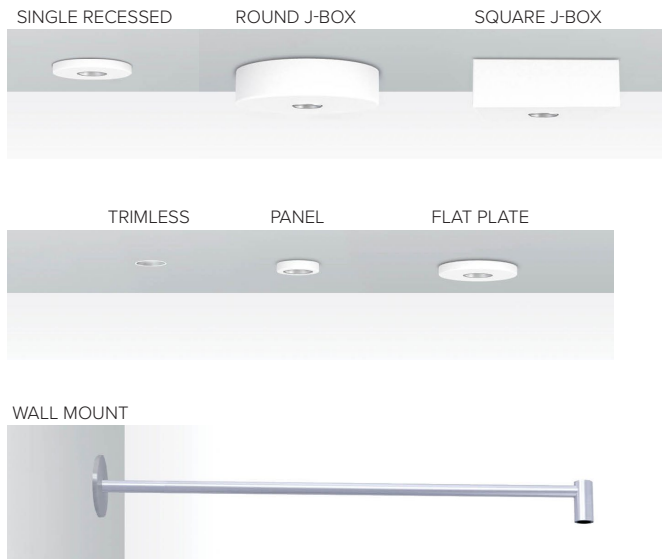
PRODUCTS OVERVIEW



Mini-Kore Pendant
Aluminum Finish
Candelebra Gem
SJ Cord
MKP-CAND-SJ-AL



Mini-Kore Pendant
Black Finish
Cylinder Gem
Stem
MKP-CYL-S-BLK



Monopoint Options

INSTALLATION

Mini-Kore Systems

Mini-Kore Pendants connect directly to the J-Box Mount and Monopoint Systems by Tegan; no separate connector is required.

WARNING: For a sloped ceiling installation, a **Universal Sloped Ceiling Adapter (USCA)** accessory must be used to ensure proper electrical operation. Refer to the Mini-Kore Pendant Spec Sheet for details.

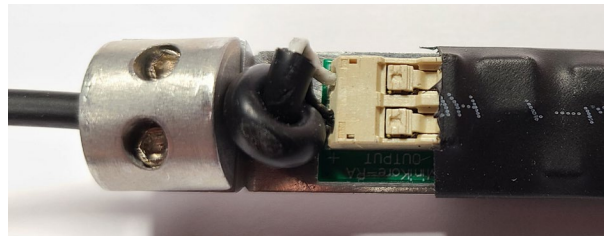
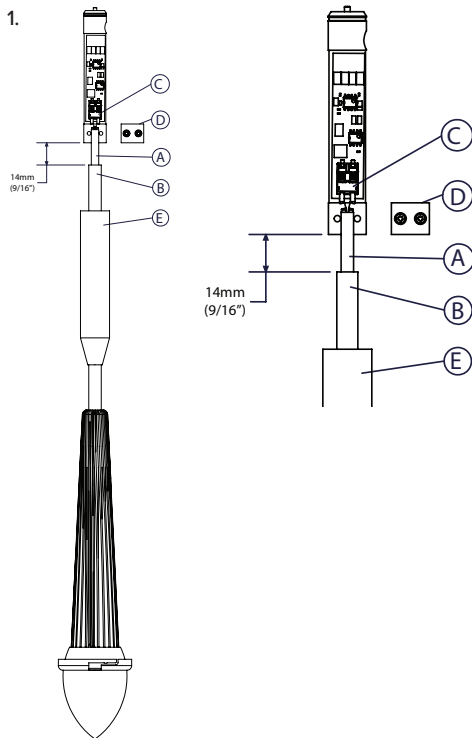
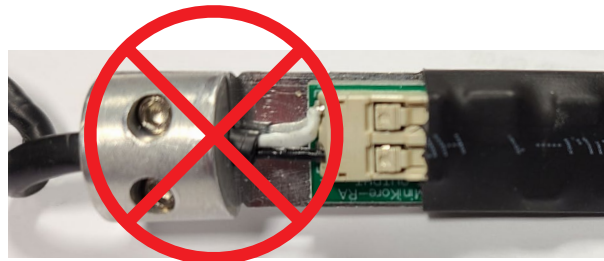


IMAGE OF A CORRECT FACTORY INSTALLATION TO REPLICATE WHEN FIELD-MODIFYING THE MINI-KORE PENDANT STEM OR SJ POWER CORD LENGTH. CONTACT TEGAN LIGHTING @ 415-504-3536 WITH QUESTIONS.



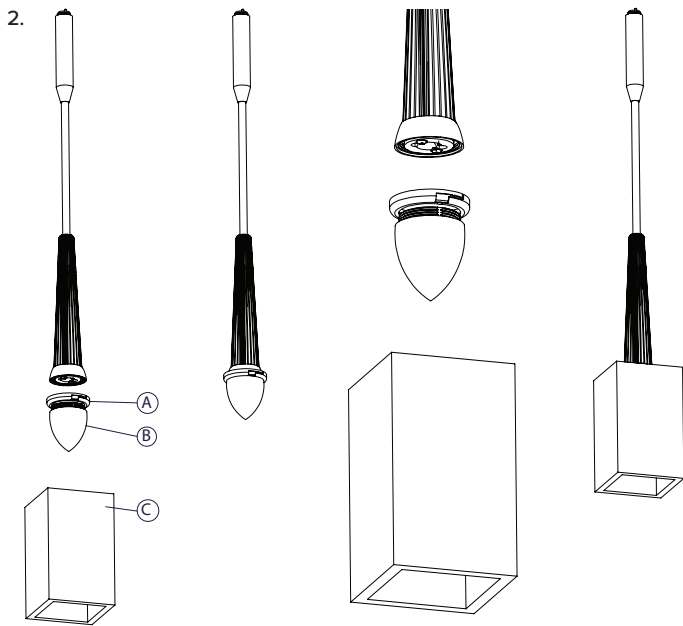
WARNING: When the Mini-Kore Pendant power cord is shortened on site, it must be installed correctly, as per factory shipped condition. Per the installation instructions below, a safety knot must be added to secure the cord/shade. **IF NOT MODIFIED CORRECTLY IN THE FIELD WHEN INSTALLED, THE PENDANT/SHADE CAN FALL AND RESULT IN DAMAGE TO THE SPACE AND/OR PERSONS.**

1. Field-Cutting Power Cord Length

- Cut and strip cord A to the desired length.
- Optional stem B should be cut as well.
- Create a knot just below the stripped conductors A to fit just above the cable clamp D (as shown in the image above).
- With a small tool, depress tabs on Connector C to allow insertion of wires. Check labels for polarity.
- Re-attach cable clamp D.
- Use cover E to attach the Mini-Kore Pendant to the mating Monopoint utilizing the “Twist & Click” system.

MINI-KORE PENDANT

J-BOX & MONOPOINT MOUNT INTEGRAL & REMOTE POWER SUPPLY(S)



2. Attaching Shades

- Insert shade Hub A onto the acrylic Gem B, aligning tabs.
- Thread Gem B into Mini-Kore Module. Make sure it's moderately tight.
- Shade C inserts up into the Hub A and then twists clockwise to snap into place.

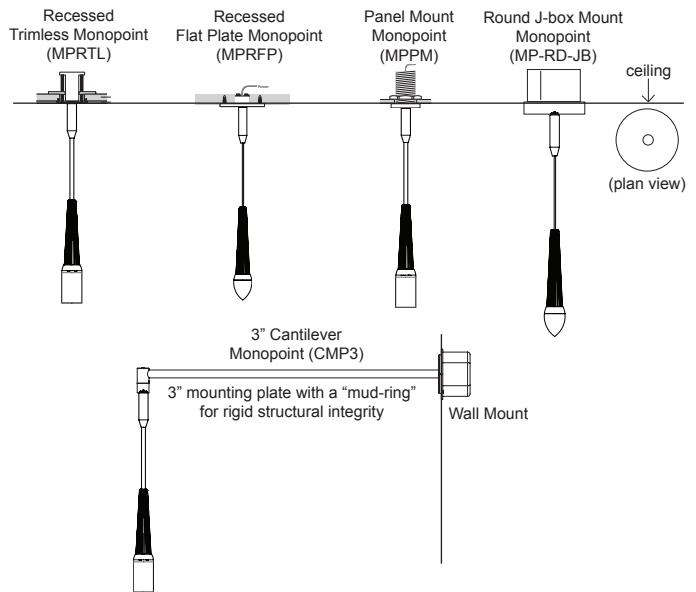
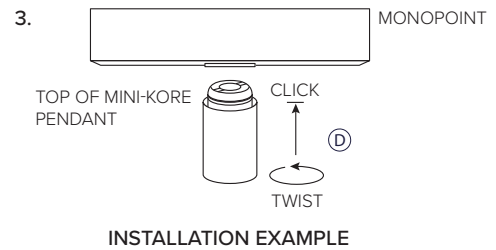
3. Mini-Kore Pendants are mated with the Twist & Click system D to:

- Monopoint(s) with an Integral Power Supply or Monopoints that utilize Remote Power Supply(s). Push in & twist to ensure the Mini-Kore Pendant is securely locked into the Monopoint connection.

4. Cleaning Instructions for Shades

- Benton (solid concrete) and Vidro (glass): Clean with a damp cloth with mild soap and water.
- Karton (cardboard): Vacuum gently with a soft upholstery brush only.
- Knitted (yarn): Dry clean or vacuum with a soft upholstery brush attachment. Do not machine wash!

WARNING: Do not exceed the maximum number of Pendants per Power Supply rating. Overloading the maximum wattage number of Mini-Kore Pendants per Power Supply will damage the system. Refer to the Remote Power Supply Spec Sheet for details and power supply maximum wattage loading.



EXAMPLE OF MINI-KORE PENDANT INSTALLED TO MONOPOINTS